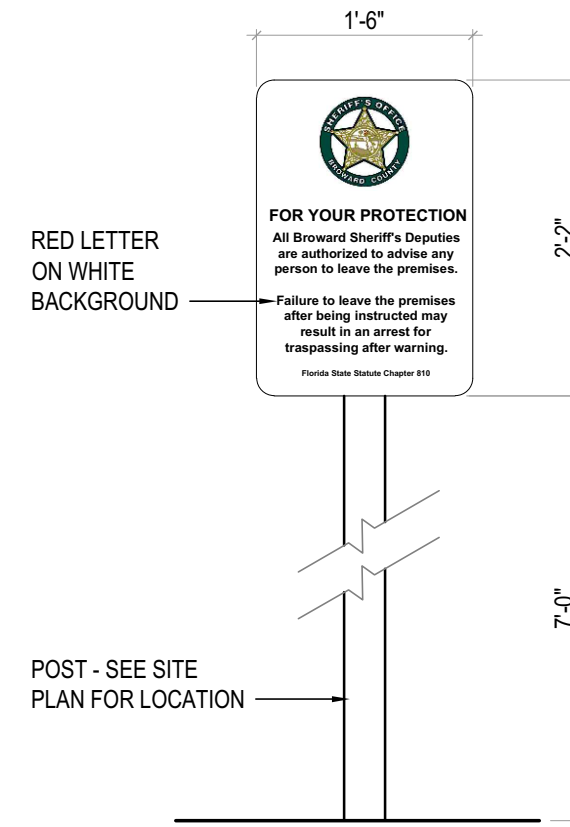


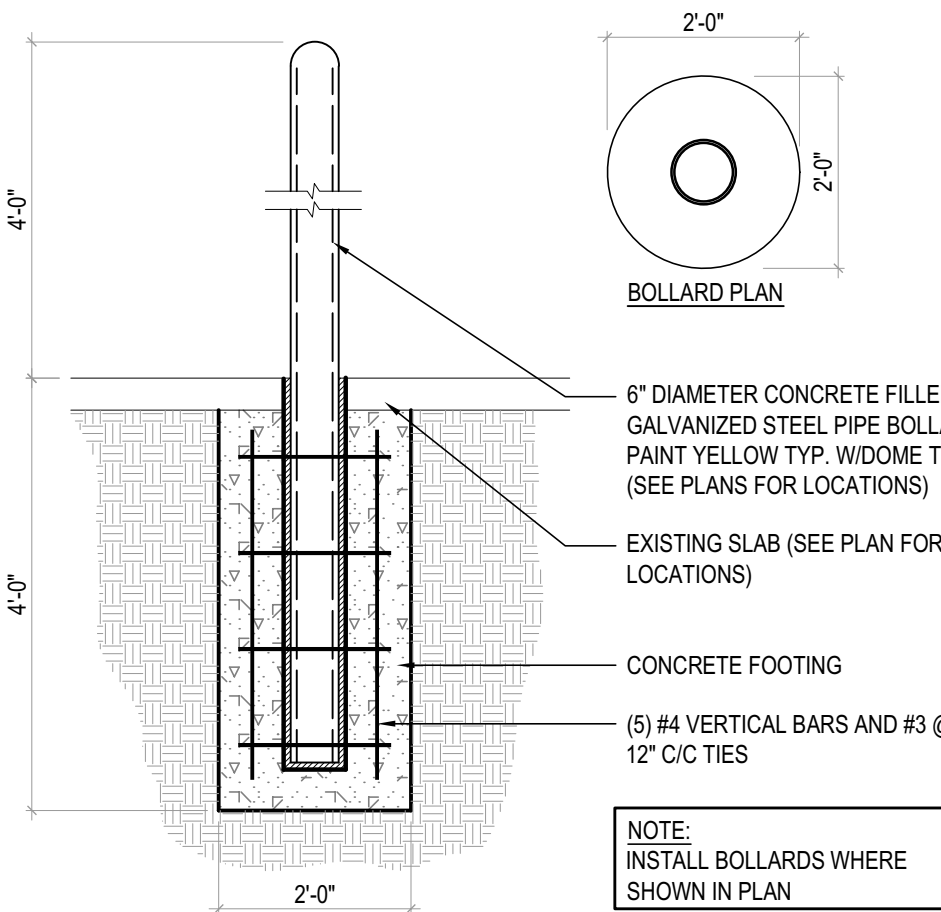
BIKE PARKING SIGN DETAIL

SCALE: 3/4" = 1'-0"



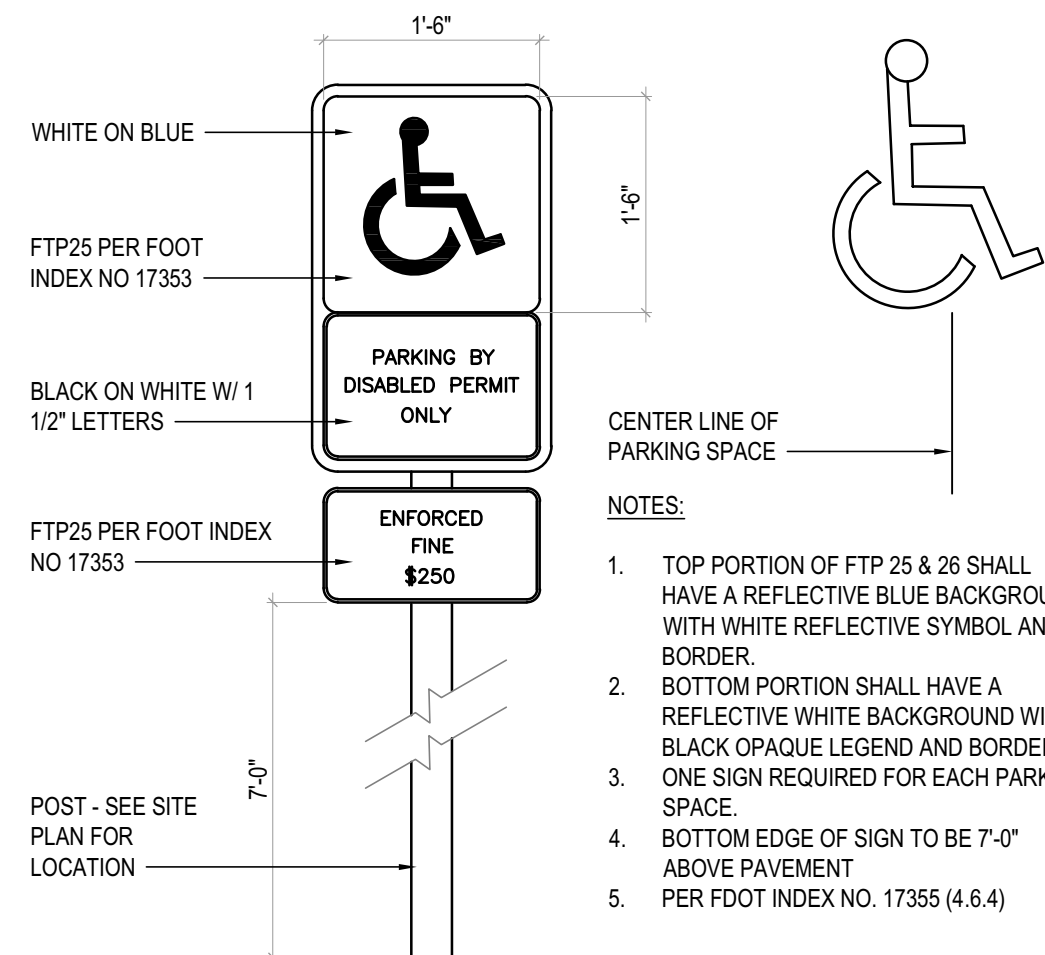
BSO NO TRESPASS SIGN DETAIL

SCALE: 3/4" = 1'-0"



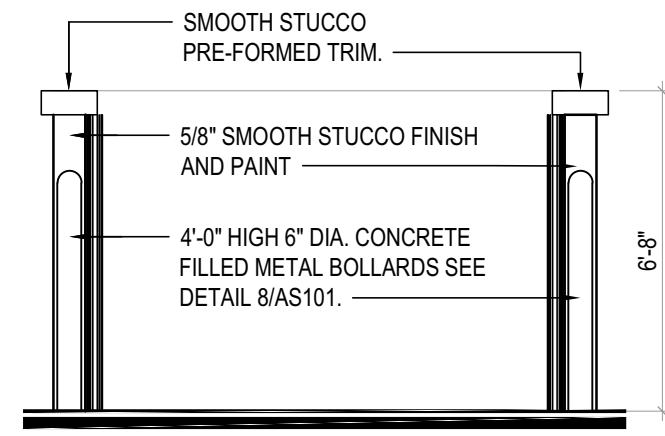
BOLLARD DETAIL

SCALE: 1/2" = 1'-0"



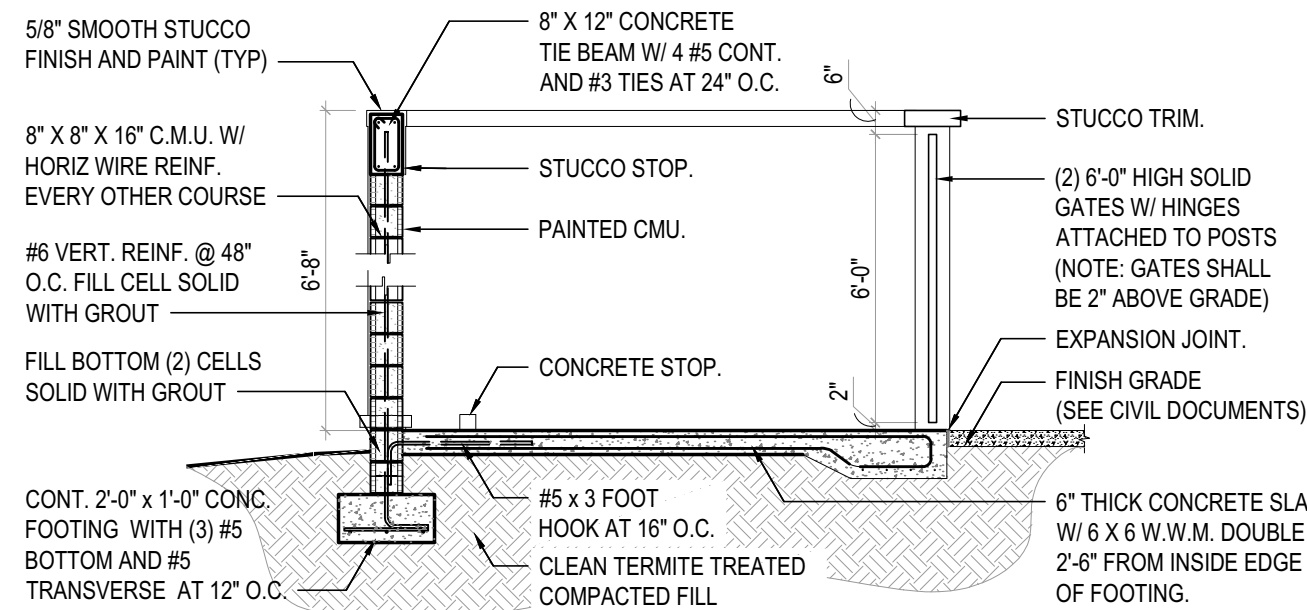
HANDICAP SIGN DETAIL

SCALE: 3/4" = 1'-0"



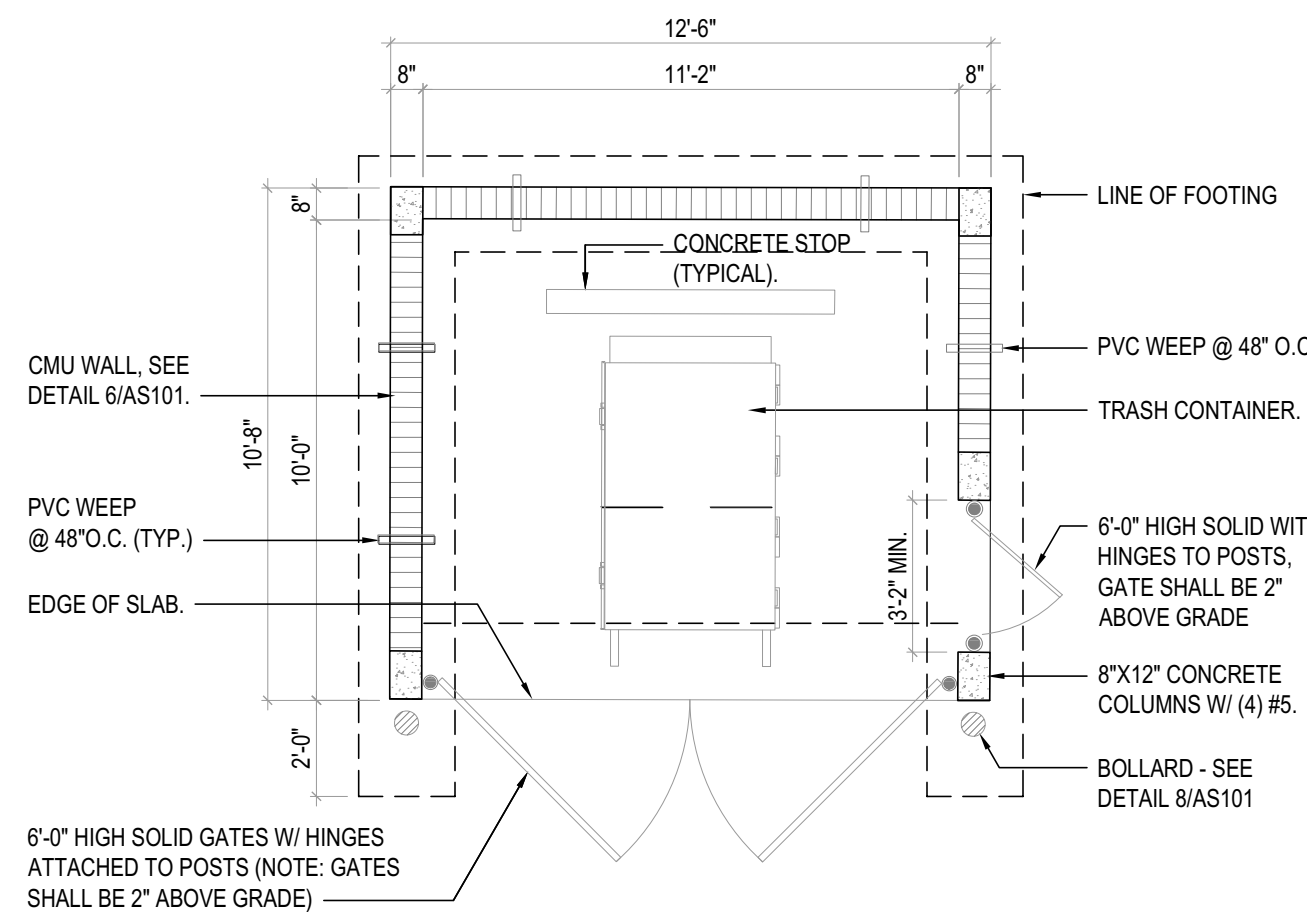
DUMPSTER ENCLOSURE ELEVATION

SCALE: 1/4" = 1'-0"



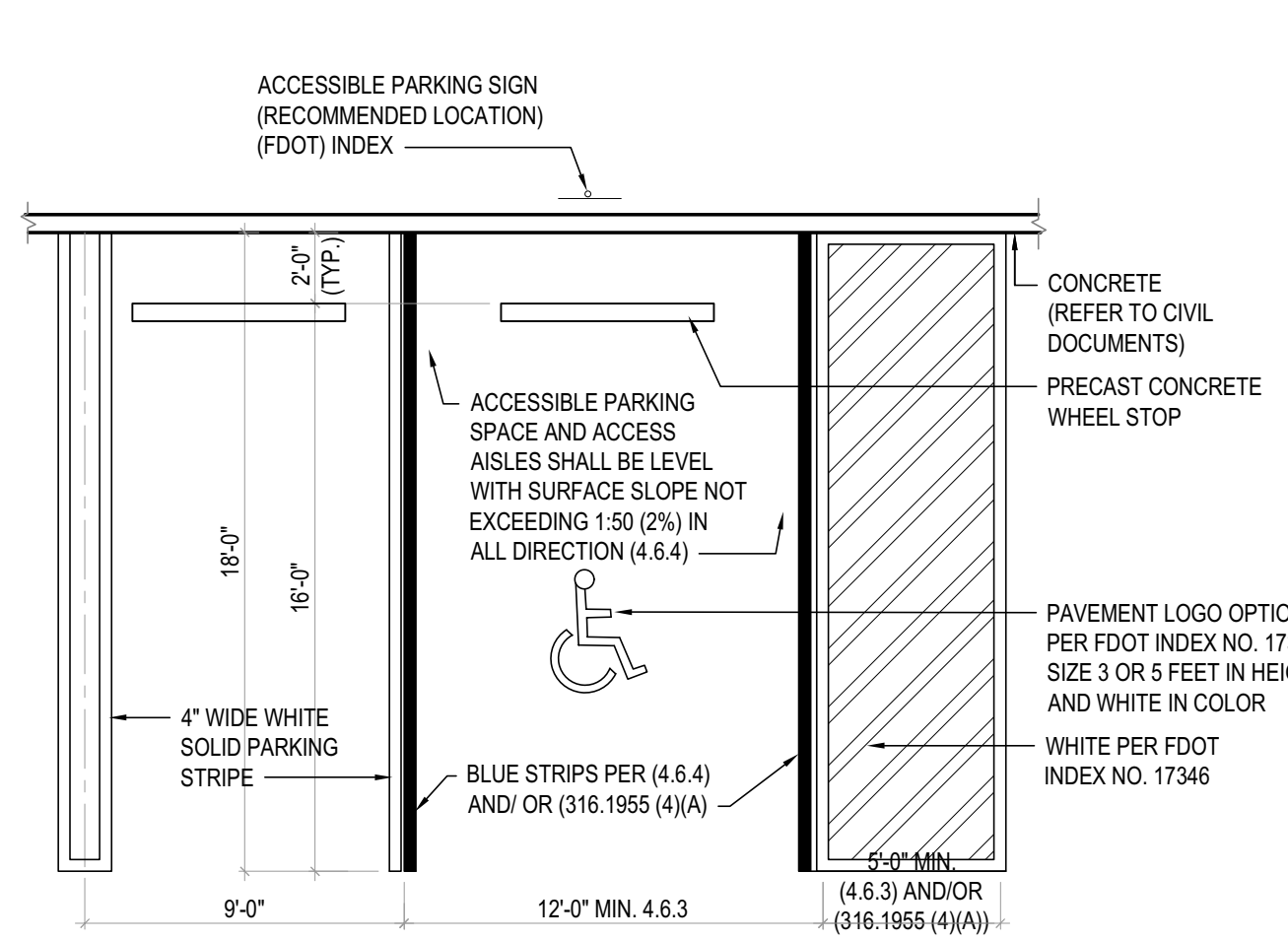
DUMPSTER ENCLOSURE SECTION

SCALE: 1/4" = 1'-0"



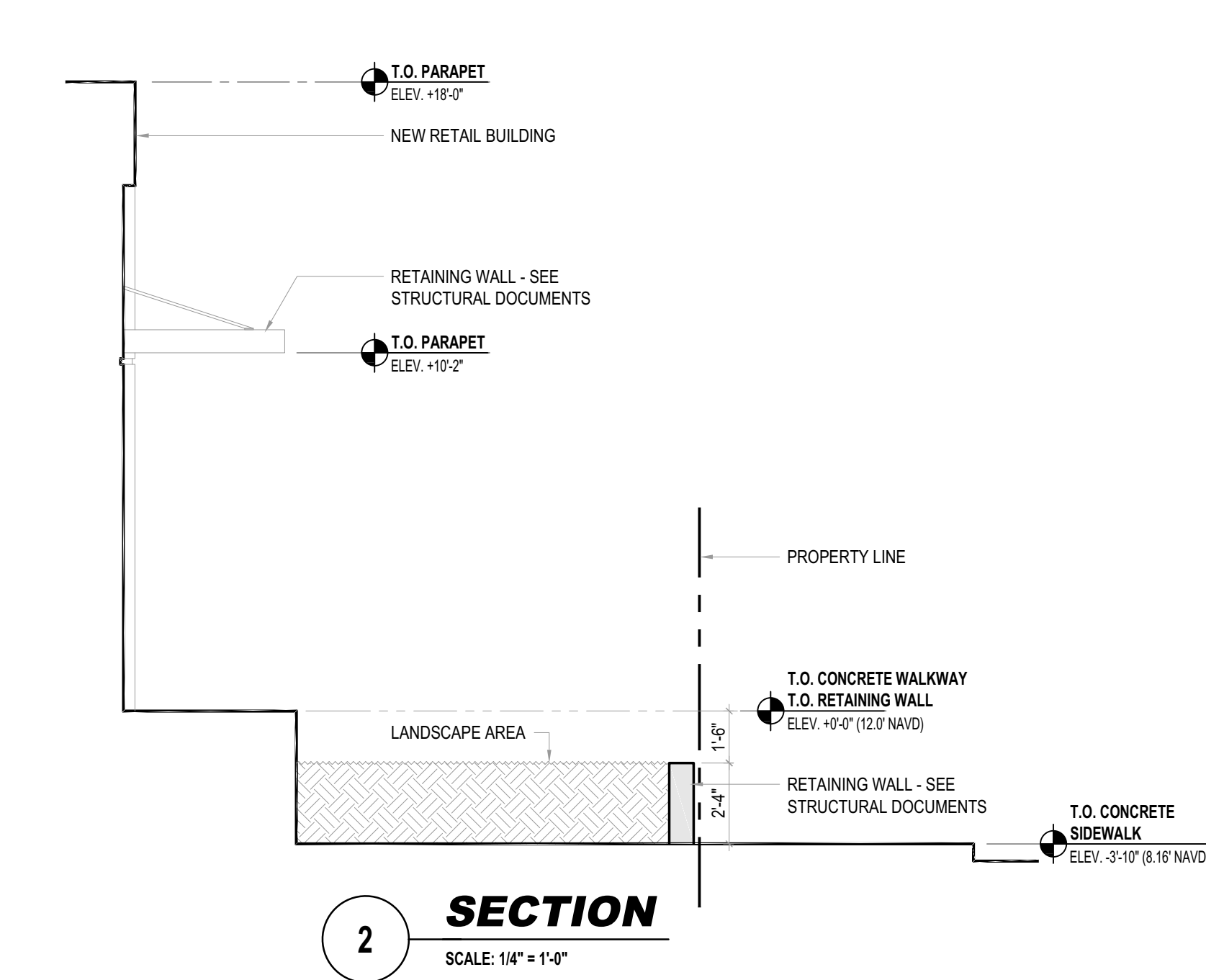
DUMPSTER ENCLOSURE PLAN

SCALE: 1/4" = 1'-0"



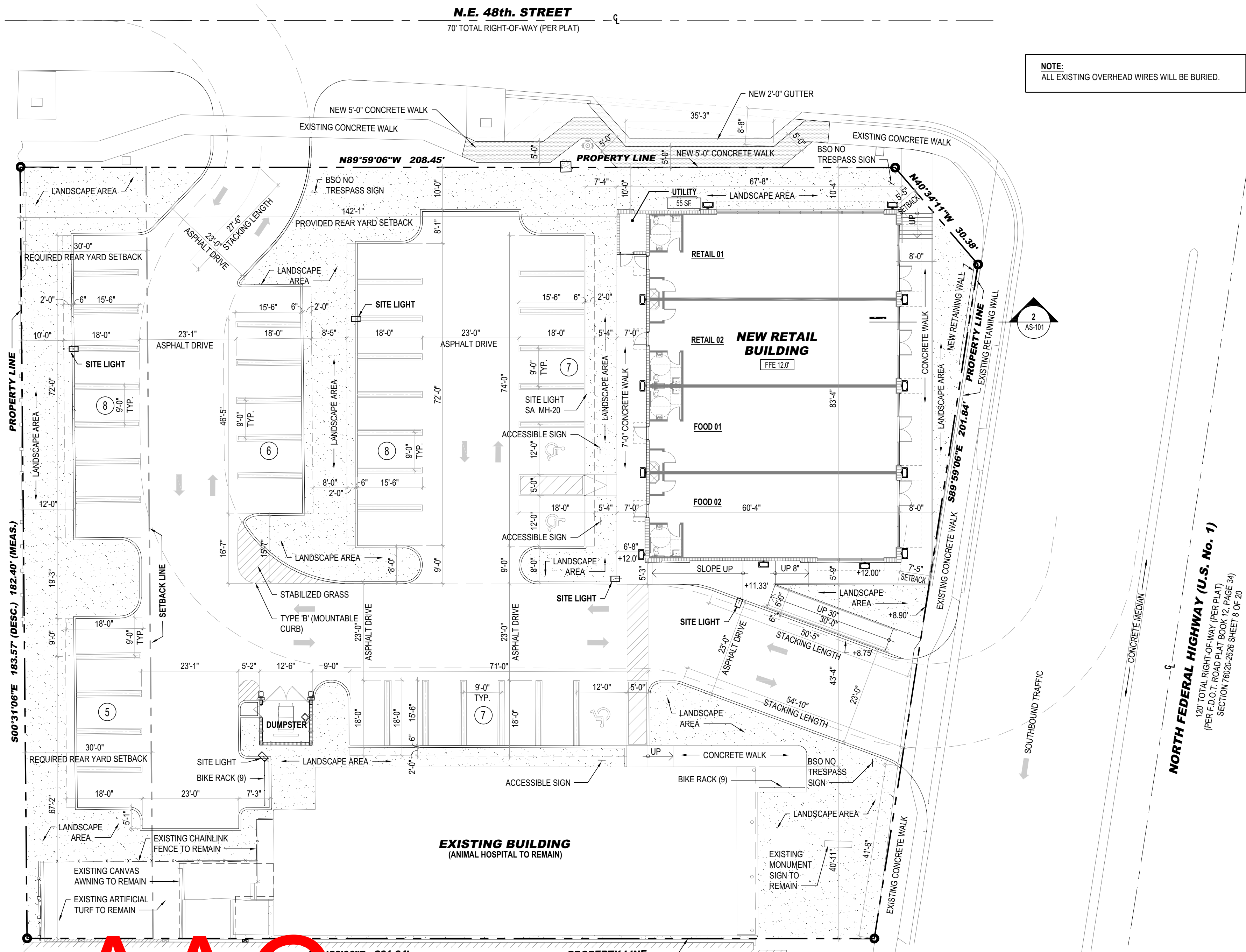
H.C. PARKING SPACE DETAIL

SCALE: 3/16" = 1'-0"



SECTION

SCALE: 1/4" = 1'-0"



SITE PLAN

SCALE: 1/16" = 1'-0"

| PARKING REQUIREMENTS | | | | |
|------------------------------|----------------|---|---|---|
| DESCRIPTION | AREA | OCCUPANCY | PARKING REQUIRED | PARKING PROVIDED |
| EXISTING ANIMAL HOSPITAL | 4,325 S.F. | VETERINARY HOSPITAL / CLINIC | 4325 S.F. @ 1 PER 500 S.F. = 9 | - |
| FOOD / DRINKS | 2 x 1,180 S.F. | CUST. SERVICE AREA = 2x540 S.F. = 1,080 S.F. 1,080 S.F. / 15 S.F. PER PERSON = 72 MAX. OCC. | 1 PARKING SPACE PER 4 PERSONS 72 / 4 = 18 PARKING SPACES MIN. | - |
| RETAIL | 2 x 1,180 S.F. | 2,360 S.F. / 300 S.F. PER PARKING SPACE | 2,360 / 300 = 8 PARKING SPACES MIN. | - |
| ACCESSIBLE PARKING REQUIRED | - | - | 2 PER 26-50 PARKING SPACES = 2 | 3 |
| TOTAL PARKING REQUIRED | - | - | TOTAL MINIMUM REQUIRED PARKING 9 + 18 + 8 = 35 PARKING SPACES | PARKING PROVIDED = 41 (INCLUDING 3 ACCESSIBLE PARKING SPACES) |
| TOTAL MAXIMUM ALLOWED (125%) | - | - | 35 x 125% = 43 | - |

STATEMENT OF COMPLIANCE

"TO THE BEST OF MY KNOWLEDGE, THESE DRAWINGS AND PROJECT MANUAL ARE COMPLETE AND COMPLY WITH THE FLORIDA BUILDING CODE 2020 SEVENTH EDITION, THE FLORIDA FIRE PREVENTION CODE, AND OTHER APPLICABLE FEDERAL CODES, STATE LAWS AND RULES, INCLUDING OTHER LOCAL ORDINANCES AND RULES AS DETERMINED BY THE AUTHORITY HAVING JURISDICTION."

APPLICABLE CODES

1. FLORIDA BUILDING CODE 2023 EIGHTH EDITION
2. FLORIDA FIRE PREVENTION CODE, 2023 EIGHTH EDITION
3. NFPA 101 - LIFE SAFETY CODE, 2023 EIGHTH EDITION

SITE DATA (B-3 ZONING DISTRICT)

| DESCRIPTION | AREA | REQUIRED | PROVIDED |
|------------------------------------|-------------|----------------------|----------------|
| TOTAL SITE AREA | 39,542 S.F. | - | - |
| EXISTING ANIMAL HOSPITAL | 4,325 S.F. | - | - |
| PROPOSED BUILDING | 5,124 S.F. | - | - |
| TOTAL BUILDING AREA | 9,449 S.F. | 60% MAXIMUM | 23.90% |
| BUILDING HEIGHT | - | MAXIMUM 105'-0" | MAXIMUM 20'-0" |
| FRONT SETBACK (EAST) | - | 0 | 5'-5" |
| SIDE SETBACK (STREET SIDE NORTH) | - | 0 | 10'-0" |
| SIDE SETBACK (INTERIOR SIDE SOUTH) | - | 0 | 0 (EXISTING) |
| REAR SETBACK (WEST) | - | MINIMUM 30'-0" | 142'-1" |
| LANDSCAPE AREA (PERVIOUS AREA) | 9,438 S.F. | MINIMUM 20% | 23.87% |
| BIKE RACKS | - | 4 BIKES / 10 PARKING | 18 BIKES |

NOTE: ALL EXISTING OVERHEAD WIRES WILL BE BURIED.